

#### e. Menu exit:

1. In the menu interface, click the button to select "EXIT". Press and hold the button to confirm to exit from the menu and return to the main interface;
2. In the menu interface, it will exit from the menu and return to the main interface automatically if there is no operation for 3 seconds;
3. When vaping, exit from the menu automatically and return to the main interface;



#### 7. Push-button ignition lock/ unlock

1. The device defaults to automatic mode upon the first startup. The automatic mode has an automatic ignition recognition function.
2. In the automatic mode, press the button twice consecutively to enter the mouth-to-lung mode and lock the button ignition function.
3. In the mouth-to-lung (MTL) mode, press the button twice consecutively to enter the automatic mode and unlock the push-button ignition function.



#### 8. Vaping

When the device is powered on, vape in the MTL mode directly. The vaping animation and duration will be displayed, and the ambient light will gradually change from green to blue, yellow and red in this duration. After 6 seconds, "over-time protection" will be triggered, and the ambient light will remain red (for details, see 13. Protection and Prompt - c. Over-time Protection).



#### 9. Puff count memory

The puff count will increase by one if the vaping duration exceeds 0.5 second, otherwise it will remain unchanged. The maximum count is 99,999; The puff count will become 1 if it exceeds 99,999.

#### 10. Power setting

Press the button three times consecutively within 2 seconds to enter the power switching mode. The power display area will flash. Click the button or hold it down to cycle through the power values within the corresponding power range of the cartridge. After 3 seconds of vaping or no operation, the power value will be confirmed automatically and the power switching mode will exit. The power display area will stop flashing. Power range of 0.3  $\Omega$  cartridge: 26 - 45W. Power range of 0.6  $\Omega$  cartridge: 13 - 25W. Power range of 0.8  $\Omega$  cartridge: 10 - 18W.

#### 11. Battery level indicator

The battery percentage will be displayed in real time based on the current battery level.

#### 12. Charging

When the TYPE-C cable is inserted for charging, a charging animation will be displayed (the battery level shown in the charging animation increases by 5% each time).

**The ambient light will change according to the charging percentage:** When the battery level is  $\leq 10\%$ , the red light will fade up and down.

When the battery level is  $\leq 30\%$ , the yellow light will fade up and down.

When the battery level is  $\leq 80\%$ , the blue light will fade up and down.

When the battery level is  $> 80\%$ , the green light will fade up and down.

When the battery is fully charged, the green light will be normally on.

When the TYPE-C cable is removed, it will exit from the charging interface and return to the main interface.



#### 13. Protection and Prompt

**a. Short circuit protection:** When a short circuit occurs, the screen will display "ATOMIZER SHORT", the ambient light will turn red, and the device will stop outputting.



**b. Low voltage protection:** When the battery is low, the screen will display "BATTERY LOW", the ambient light will flash yellow twice, and the device will stop outputting.



**c. Over-time protection:** If a single vaping duration exceeds 6 seconds, the screen will display "OVER 6S", the ambient light will turn red, and the device will stop outputting.



**d. Open circuit prompt:** When the cartridge is disconnected from the device or there is no cartridge, the ambient light will turn red, and the screen will display "NO ATOMIZER".



**e. Cartridge insertion/ removal prompt:** When the cartridge is removed, the ambient light will flash orange twice. When the cartridge is inserted, the ambient light will flash green twice.

#### Warm Reminder

1. Please use a high-quality power adapter (5V/2A) and USB cable that have passed safety certification for charging.
2. If you carry this product on a plane, please remove the cartridge from the device and pack it separately to prevent leakage due to changes in aircraft pressure.
3. Avoid high temperature, flammable and explosive articles, low temperature, water, and humid environment during use and storage. Do not store it with hard objects during transportation to prevent damage to the device. It is recommended to charge the device at least once a month to extend its life time.
4. Do not use this device in a strong static electricity environment.

#### WARNING

**The new FDA regulations apply to the sales and distribution of all E-cig products.**

1. Do not give away free samples.

2. It is prohibited to sell all types of E-cig products to people under the age of 21.
3. It is prohibited to sell all types of E-cig products in vending machines except those specified by laws and regulations.
4. It is prohibited to introduce products with "light", "low", "mild", or other similar descriptions in labels or advertisements into interstate trade.
5. It is strictly forbidden to be used by young children, pregnant women, and women during breastfeeding or patients with heart disease, hypertension, diabetes, depression, and asthma. Keep the product out of the reach of children, non-smokers, and animals.
6. Please do not drink it.
7. It may contain nicotine, which is known to be a highly addictive substance.
8. Swallowing or skin contact with this product may cause intoxication.
9. Please keep away from flammables and explosives when using or charging to avoid hazards.
10. Do not disassemble the product. The company won't be responsible for any product damage or personal injury caused by the improper operation.
11. Please consult your local vape shop or contact us through service@myuwell.com if you need help using the product.

#### Product Verification

- Visit UWELL's official website [www.myuwell.com](http://www.myuwell.com) to verify under the SUPPORT navigation bar.
- Please scan the QR code on the package with your phone camera to verify. The result will be displayed on the page.
- Or you can enter the 16-bit anti-counterfeit code on the surface of the user manual into the input box, and the result will be displayed within seconds.

#### Attention:

Please keep your package and the warranty card.

#### Warranty Period

180 days from the purchasing date.

#### Warranty Parts

Device and atomizer only. Coil and pod are excluded.

#### Warranty Service Excluded Conditions

1. Expiration of warranty period.
2. Damage caused by failure to use, maintain and keep the product according to the requirements of the product instructions.
3. Damage caused by maintenance service personnel non-authorized by UWELL.
4. Damage caused by using inferior accessories of other brands.
5. Damage caused by the force majeure.

#### Warranty Service Guide

1. You can ask the shop you purchased your vaping device for the warranty service.

2. You can visit [www.myuwell.com](http://www.myuwell.com) and ask for warranty service under the SUPPORT navigation bar.
3. You can contact us through service@myuwell.com if you have any questions.

**Please use your phone camera to scan the QR code for further information.**



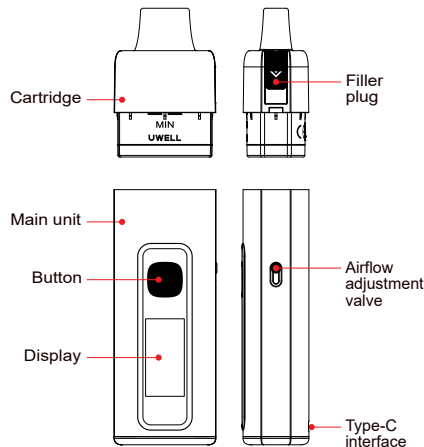
# TYPHOS

## User Manual

### UWELL Typhos Pod System

©2025 By SHENZHEN UWELL TECHNOLOGY CO., LTD.  
All Rights Reserved.

## Product Introduction



## Product Specification

**Main material:** PCTG, aluminum alloy  
**Dimension:** 110.2 mm×31.6 mm×20.5 mm  
**Net weight:** Approximately 73 g  
**Capacity:** 6.0 mL  
**Maximum output power:** 45 W  
**Cartridge specification:**  
Iron chromium aluminum honeycomb mesh 0.3  $\Omega$  (built-in)  
Iron chromium aluminum honeycomb mesh 0.6  $\Omega$  (spares)  
**Cell capacity:** 2000 mAh

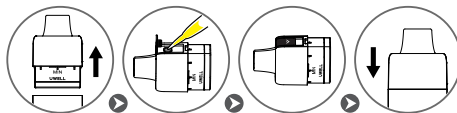
## Quick Start Guide

1. Remove the cartridge and tear off the insulating film at the bottom before use for the first time;
2. Open the filler plug for filling and after that, insert the cartridge into the main unit and keep it stand for 10 minutes;
3. Press the button five times consecutively within 2 seconds to turn on the device and use by inhaling directly.

## Detailed Instructions for Use

### 1. Filling and cartridge replacement

- a. Remove the cartridge and tear off the insulating film at the bottom before use for the first time.
- b. Open the filler plug and fill.
- c. Put the filler plug back on.
- d. Insert the cartridge into the main unit.
- e. For cartridge replacement, remove the old cartridge from the main unit and insert a new one.

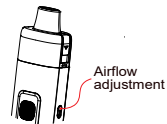


### Precautions:

- a. Insert the drip tip of the bottle into the filling slot before filling.
- b. DO NOT leave the filling slot open for a long time. After filling, immediately put the filler plug back on and make sure it is pressed in place to prevent leakage.
- c. After filling a new cartridge for the first time, please let it stand for 10 minutes before use to prevent damages to the pod caused by operation without e-liquids.
- d. When the remaining e-liquid in the cartridge is below the "MIN" level, please refill in time.

### 2. Airflow adjustment

Insert the cartridge into the main unit and adjust the airflow rate via the valve at the side.



### 3. Startup/ shutdown

Press the button five times consecutively within 2 seconds to turn on or off the device.

The corresponding animations will be displayed as follows:

When turning on, the ambient light changes color along with the startup animation;  
When turning off, the ambient light changes color along with the shutdown animation and gradually fades out.

#### Startup animation



#### Shutdown animation



### 4. Theme ambient light display

When the screen lights up, the ambient light in color corresponding to different theme is normally on. When the screen is off, the ambient light turns off:

Wind theme: The ambient light is normally on in light blue.

Lightning theme: The ambient light is normally on in purple.

SIMPLE theme WAVES mode: The ambient light is normally on in blue.

SIMPLE theme STORM mode: The ambient light is normally on in green.

### 5. Standby

If there is no any operation, the screen will turn off after 10 seconds and the device will enter standby mode.

### 6. Menu settings

#### a. Backlight brightness selection:

Press the button four times consecutively to enter the menu interface. Click the button to select "DAY" or "NIGHT" backlight brightness. Press and hold the button to confirm. After that, return to the main interface.



- b. **Theme selection:** In the menu interface, click the button to select "THEME". Press and hold the button to enter the theme selection menu. Click the button to select a theme, stay at the corresponding theme to display the corresponding highlighted animation, press and hold the button to confirm. After that, return to the main interface and enter the selected theme.



#### c. Puff counter reset:

In the menu interface, click the button to select "PUFF". Press and hold the button to confirm the puff counter reset. After that, return to the main interface.



#### d. Output mode selection:

In the menu interface, click the button to select "MODE". Press and hold the button to enter the mode selection menu. Click the button to select "WAVES" or "STORM" output mode settings. Press and hold the button to confirm. After that, return to the main interface.

