

UWELL TYPHOS

User Manual

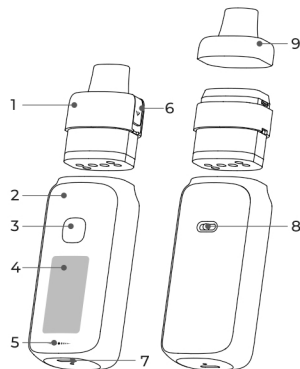
UWELL TYPHOS PRO Pod System

©2025 By SHENZHEN UWELL TECHNOLOGY CO., LTD.

All Rights Reserved.

ENGLISH

Product Introduction



- | | | |
|---------------------|-----------------------------|----------------|
| 1. Cartridge | 2. Main unit | 3. Button |
| 4. Display | 5. LED light | 6. Filler plug |
| 7. Type-C interface | 8. Airflow adjustment value | |
| 9. Mouthpiece | | |

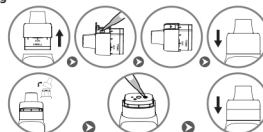
Product Specification

Main material	PCTG, aluminum alloy	Capacity	6.0mL/2.0mL
Dimension	109*36*25.7mm	Maximum output power	45W
		Cartridge resistance	0.3Ω/0.6Ω/0.8Ω
Net weight	Approximately 97 g	Cell capacity	3000 mAh

Quick Start Guide

1. Take the cartridge off the device, then remove the insulating film from the bottom.
2. Open the filler plug for filling and after that, insert the cartridge into the main unit and keep it stand for 10 minutes.
3. Press the button five times consecutively within 2 seconds to turn on the device and use by inhaling directly.

1. Filling



Precautions:

- Insert the drip tip of the bottle into the filling port and press it all the way down before filling.
- DO NOT leave the filling slot open for a long time. After filling, immediately put the filler plug (or mouthpiece) back on and make sure it is pressed in place to prevent leakage.
- When filling a new cartridge for the first time, please let it stand for 10 minutes before use to prevent damages to the pod caused by operation without e-liquids.
- When the remaining e-liquid in the cartridge is below the "MIN" level, please refill in time.
- Please make sure to align with the filling port when filling. DO NOT fill e-liquid into the airway in the middle.

2. Airflow adjustment

Insert the cartridge into the main unit and adjust the Airflow via the value at the side.

3. Startup / shutdown

Press the button five times consecutively within 2 seconds to turn on or off the device.

4. Standby

If there is no any operation, the screen will turn off after 10 seconds and the device will enter standby mode.

5. Menu settings

Press the button four times consecutively to enter the first-level menu interface. Click the button to choose "STORM MODE", "WAVES MODE", "THEME", "BRIGHT", "PUFF", or "EXIT".

a. Output mode selection: On the first-level menu interface, press the button to choose "WAVES MODE" or "STORM MODE". Press and hold the button to confirm. After that, return to the main interface.

b. Theme selection: On the first-level menu interface, click the button to choose "THEME". Press and hold the button to enter the theme selection menu. Click the button to choose "DYNAMIC1", "DYNAMIC2", or "SIMPLE", press and hold the button to confirm. After that, return to the main interface and enter the selected theme.

c. Backlight brightness selection: On the first-level menu interface, click the button to choose "BRIGHT". Press and hold the button to enter the backlight selection menu. Click the button to choose among three backlight brightness levels, i.e. "HIGH", "MID" and "LOW". Press and hold the button to confirm. After that, return to the main interface.

d. Puff counter reset: On the first-level menu interface, click the button to choose "PUFF". Press and hold the button to confirm the puff counter reset. After that, return to the main interface.

e. Menu exit:

1. In the menu interface, click the button to select "EXIT". Press and hold the button to confirm to exit from the menu and return to the main interface.

2. In the menu interface, it will menu to the menu and return to the main interface automatically if there is no operation for 3 seconds.

3. When vaping, exit from the menu automatically and return to the main interface.

6. Vaping

When the device is powered on, vape directly. The vaping animation and duration will be displayed.

7. Puff count memory

The puff count will increase by one if the vaping duration exceeds 0.5 second, otherwise it will remain unchanged. The maximum count is 99,999.

8. Power setting

Press the button three times consecutively within 2 seconds to enter the power switching mode. The power display area will flash. Click the button or hold it down to cycle through the power values within the corresponding power range of the cartridge. After 3 seconds of vaping or no operation, the power value will be confirmed automatically and the power switching mode will exit. The power display area will stop flashing.

Power range of 0.3 Ω cartridge	26 - 45 W
Power range of 0.6 Ω cartridge	13 - 25 W
Power range of 0.8 Ω cartridge	10 - 18 W

9. Battery level indicator

The battery percentage will be displayed in real time based on the current battery level.

10. Charging

When the TYPE-C cable is inserted for charging, a charging animation will be displayed, and the ambient light will show different effects according to the current state of charge.

11. Protection and Prompt

- Short circuit protection:** When a short circuit occurs, the screen will display "ATOMIZER SHORT", the device will stop outputting.
- Low voltage protection:** When the battery is low, the screen will display "BATTERY LOW", the device will stop outputting.
- Over-time protection:** If a single vaping duration exceeds 6 seconds, the screen will display "OVER 6S", the device will stop outputting.
- Open circuit prompt:** When the cartridge is disconnected from the device or there is no cartridge, the screen will display "NO ATOMIZER".
- Cartridge insertion / removal prompt:** The ambient light will flash to prompt when the cartridge is removed or inserted.

Warm Reminder

1. Please use a high-quality power adapter (5V/2A) and USB cable that have passed safety certification for charging.
2. If you carry this product on a plane, please remove the cartridge from the device and pack it separately to prevent leakage due to changes in aircraft pressure.
3. Avoid high temperature, flammable and explosive articles, low temperature, water, and humid environment during use and storage. Do not store it with hard objects during transportation to prevent damage to the device. It is recommended to charge the device at least once a month to extend its life time.
4. Do not use this device in a strong static electricity environment.