

USER MAUNAL

G5

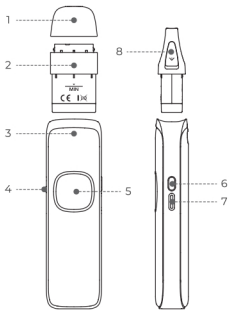
UWELL CALIBURN G5

©2026 By SHENZHEN UWELL TECHNOLOGY CO., LTD.
All Rights Reserved.

ENGLISH

1. Product Introduction

1. Mouthpiece
2. Cartridge
3. Main unit
4. Airflow adjustment valve
5. Screen
6. Button
7. Type-C interface
8. Filler plug



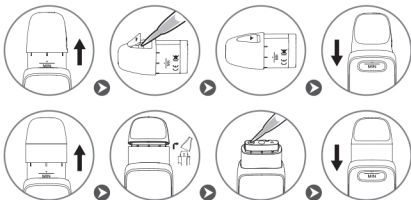
2. Product Specification

Main material	PCTG, aluminum alloy	Capacity	3.0ml / 2.0ml
Dimension	120.1*28.85*16.8 mm (FDA)	Maximum output power	35W
	118.65*28.85*16.8 mm (INT)	Cell capacity	1600 mAh
Cartridge specification	115.9*28.85*16.8 mm (TPD, CRC)	Net weight	65g
	0.4Ω / 0.6Ω / 0.9Ω / 1.2Ω		

3. Quick Start Guide

1. Remove the mouthpiece, inject e-liquid through the filling port, then put the mouthpiece back on and let it stand for 10 minutes.
2. Pull out the cartridge, remove the insulating film at the bottom of the cartridge, and insert the cartridge into the main unit;
3. Press the button 5 times consecutively within 2 seconds to turn on the device and take a drag to vape.

4. Filling



Precautions:

1. Insert the drip tip of the bottle into the filling port before filling.
2. After filling, immediately put the filler plug (or mouthpiece) back on to prevent leakage.
3. When the remaining e-liquid in the cartridge is below the "MIN" level, please refill in time.
4. After filling a new cartridge for the first time, please let it stand for 10 minutes before use to prevent damage to the pod caused by operation without e-liquid.

5. Enter menu

Press the button four times consecutively to enter the menu, then click to select an option. The device will automatically return to the home screen after 3 seconds of inactivity.

5.1 Theme switching

Enter the menu, click to select THEME, press and hold the button for 1 second to enter the THEME submenu, click to select a UI style, then press and hold for 1 second to apply it.

5.2 Mode switching

Enter the menu, click to select either WAVES MODE or STORM MODE, press and hold the button for 1 second to confirm the selected output mode.

5.3 Custom Tap Sensor mode

Enter the menu, click to select TAP SENSOR, press and hold the button for 1 second to enter the TAP SENSOR submenu, click to select the function, then press and hold for 1 second to apply it.

5.4 Brightness adjustment

Enter the menu, click to select BRIGHTNESS, press and hold the button for 1 second to adjust brightness levels.

5.5 Puff counter reset:

Enter the menu, click to select PUFF, press and hold the button for 1 second to reset the puff counter to zero.

5.6 Exit Menu:

Enter the menu, click to select EXIT. Press and hold the button for 1 second to exit the menu.

6. TAP SENSOR Menu

6.1 Quick UI switching

Enter the menu, select THEME, press and hold the button for 1 second to enable the current function, tap the device 3 times or more to switch UI styles.

6.2 Quick mode switching

Enter the menu, click to select MODE, press and hold the button for 1 second to enable the current function, tap the device 3 times or more to switch output modes.

6.3 Quick brightness switching

Enter the menu, click to select BRIGHTNESS, press and hold the button for 1 second to enable the current function, tap the device 3 times or more to switch brightness levels.

6.4 Quick access to MAIN MENU

Enter the menu, click to select MAIN MENU, press and hold the button for 1 second to enable the current function, tap the device 3 times or more to enter the main menu.

6.5 Disabling Tap Sensor

Enter the menu, click to select DISABLE, press and hold the button for 1 triple to disable TAP SENSOR.

7. Power Adjustment Interface

1. Press the button three times consecutively. The wattage display will begin flashing. Short press/long press to adjust the power.
2. Exit the power adjustment interface by taking a puff or after 3 seconds of inactivity.

8. Protection and Warning

1. Short circuit protection: When a short circuit occurs, the screen will display "ATOMIZER SHORT", the device will stop outputting.
2. Low voltage protection: When the battery is low, the screen will display "BATTERY LOW", and the device will stop outputting.
3. Over-time protection: If a single puff exceeds 6 seconds, the screen will display "OVER 6S", and the device will stop outputting.
4. Open circuit warning: When the cartridge is disconnected from the device or there is no cartridge, the screen will display "NO ATOMIZER".

Warm Reminder

1. Please use a high-quality power adapter (5V/2A) and USB cable that have passed safety certification for charging.
2. If you carry this product on a plane, please remove the cartridge from the main unit and pack it separately to prevent leakage due to changes in aircraft pressure.
3. Avoid high temperature, flammable and explosive articles, low temperature, water, and humid environment during use and storage. Do not store it with hard objects during transportation to prevent damage to the device. It is recommended to charge the device at least once a month to extend its life time.
4. Do not use this device in a strong static electricity environment.